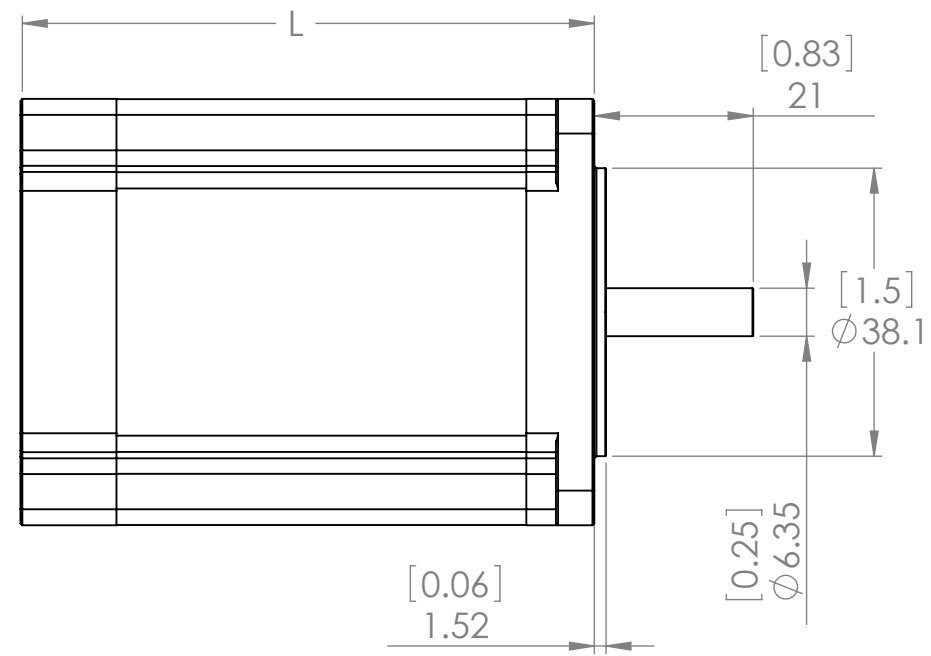
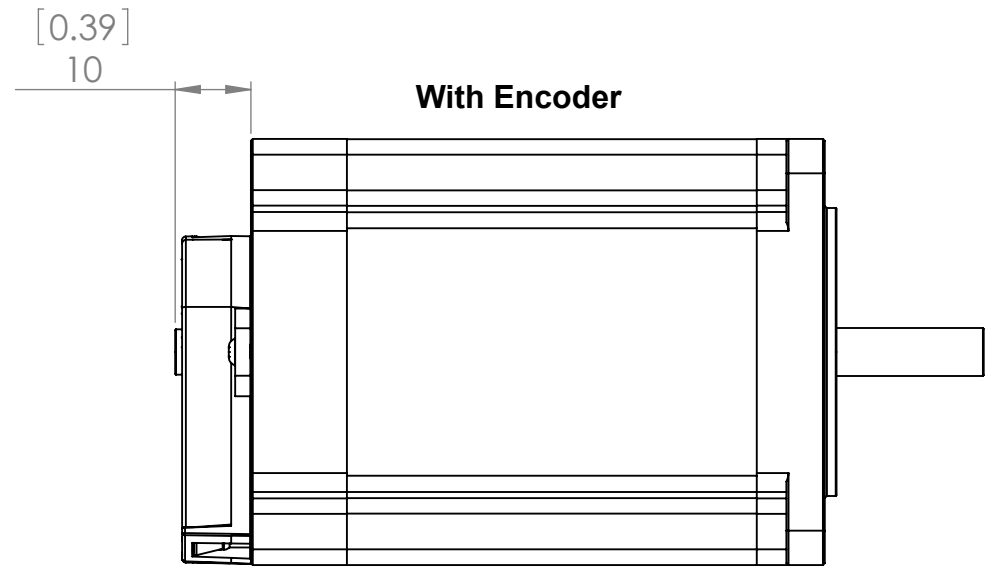
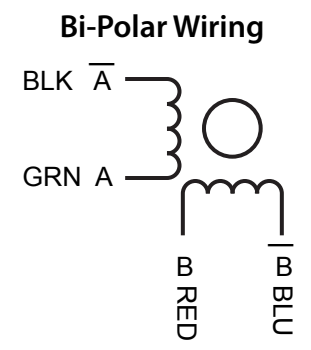
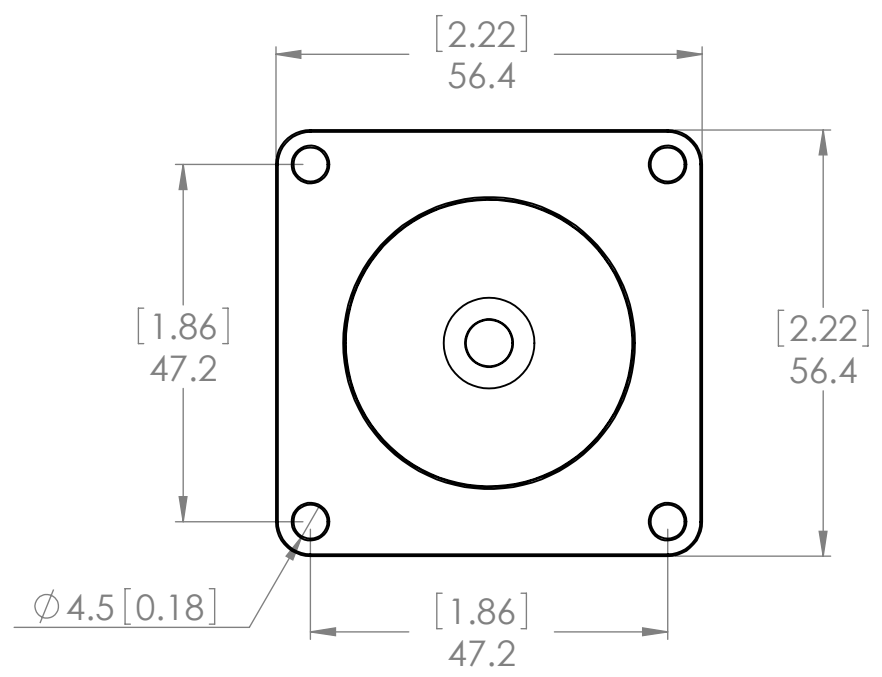


D
C
B
A

D
C
B
A



Motor Series	Length (L)	Rated Current	Phase Resistance	Phase Inductance	Holding Torque	Detent Torque	Rotor Inertia	Lead Wires	Motor Weight
	mm	(A)	Ω	(mH)	(N.cm)	(N.cm)	(g.cm ²)	(No.)	(g)
4412	45	0.62	12	26	80	2.8	190	4	520
6403	56	2.5	1.2	4.8	110	3.5	280	4	680
6415	56	1.5	3.6	13.8	110	3.5	280	4	680
7425	64	2.5	1.5	4.5	150	5	380	4	850
8415	76	1.5	3.9	14.1	180	6	440	4	1050
8425	76	2.5	1.8	6.5	180	6	440	4	1050



PROPRIETARY AND CONFIDENTIAL
THE INFORMATION CONTAINED IN THIS DRAWING IS THE SOLE PROPERTY OF NET CONTROLS LLC. ANY REPRODUCTION IN PART OR AS A WHOLE WITHOUT THE WRITTEN PERMISSION OF NET CONTROLS LLC IS PROHIBITED.

UNLESS OTHERWISE SPECIFIED: DIMENSIONS ARE IN INCHES TOLERANCES: FRACTIONAL ± ANGULAR: MACH ± BEND ± TWO PLACE DECIMAL ±.020 THREE PLACE DECIMAL ± HOLE LOCATIONS ±.010		NAME	DATE	NET CONTROLS LLC	
INTERPRET GEOMETRIC TOLERANCING PER:	MATERIAL	DRAWN		TITLE: SINGLE/DOUBLE SHAFT STEPPER MOTORS	
FINISH		CHECKED			
APPLICATION	DO NOT SCALE DRAWING	ENG APPR.			
		MFG APPR.			
		Q.A.		SIZE	DWG. NO.
		COMMENTS:		B	
				SCALE: 1:1	SHEET 1 OF 1
					REV